



## Road Glide LED Windshield Trim Installation Instructions

We thank you for purchasing the Custom Dynamics® Road Glide LED Windshield Trim. Our products utilize the latest technology and highest quality components to ensure you the most reliable service. We offer one of the best warranty programs in the industry and we back our products with excellent customer support, if you have questions before or during installation of this product please call Custom Dynamics® at 1(800) 382-1388.

**Part Numbers:** CD-RG-WT-15-B CD-RG-WT-15-C  
CD-RG-WTSEQ-15-B CD-RG-WTSEQ-15-C

**Fits:** 2015-2021 Harley-Davidson® Road Glide (FLTRX), Road Glide Special (FLTRXS), Road Glide Limited (FLTRK), Road Glide Ultra (FLTRU), CVO™ Road Glide (FLTRXSE), and CVO™ Road Glide Ultra (FLTRUSE).



### Package Contents:

- LED Windshield Trim Assemblies (pair)
- Harness (pair)
- 10-32 Button Head Cap Screw (x4)
- Washers (12)



# ATTENTION



Please read all Information below before Installation

**Warning:** Disconnect negative battery cable from battery; refer to owner's manual. Failure to do so may result in electrical shock, injury, or fire. Secure negative battery cable away from positive side of battery and all other positive voltage sources on vehicle.

**Safety First:** Make sure the bike is parked on a level surface and bike's mechanical components are cool to the touch.

**Notice:** This product is designed and intended for use as auxiliary lighting on motorcycles only. This product is NOT intended to replace any original equipment lighting installed on the motorcycle and should not be used for that purpose. This product must be wired in such a fashion that it does not interfere with any original equipment lighting.

**Note:** You will have to remove the front fairing dash and windshield in order to complete this installation. Please refer to your manufacturer's service manual if unsure of this procedure.

**Cleaning:** Take special care in cleaning the finish. Use only Alcohol or Iso-Heet and a fine microfiber cloth to remove dirt or debris. Never use abrasive polishes or cleaners as these can scratch the finish.

**Notice:** Failure to use the provided mounting hardware will void all warranties.

**Note:** Over-tightening the mounting hardware will cause the paint to chip which is not covered under the warranty.

### Installation:

1. Remove and discard the 4 stock windshield fasteners (Picture 1). Lift the windshield up to remove. Store the windshield in a safe place to prevent damage.



2. Once the windshield fasteners and windshield are removed, you will need to remove the vent. The vent is secured to the fairing by clips. Position yourself in the front of the motorcycle and lift straight up on the vent to release. (Picture 2) Store vent in a safe place to prevent damage.



Questions? Call us at: 1 (800) 382-1388 M-TH 8:30AM-5:30PM / FR 9:30AM-5:30PM EST

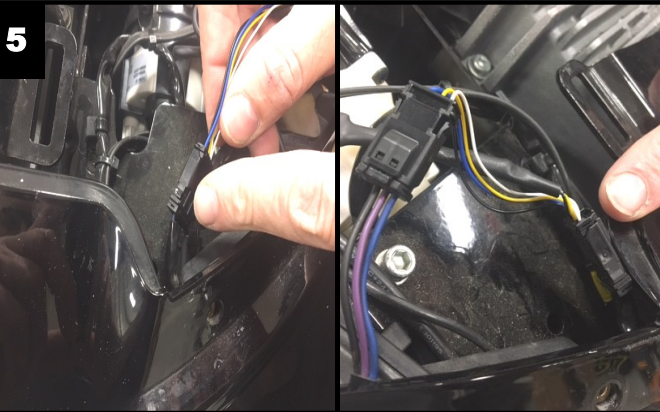
## Installation Instructions - Page 2

### Installation (Continued):

3. Identify the left and right windshield trim and install the Harnesses as shown in Picture 3.



4. Connect the left and right windshield trim, with the Harness installed, inline with the left and right 3 pin JAE plug on the bike. (shown in Picture 4 and 5).



5. Secure and route the windshield trim harness for each side. Route the wires towards the inner fairing. You will notice a small gap at the point where the inner and outer fairing mate. This is where the wires will exit. (shown in Picture 6 and 7)



### Note

Note: When reinstalling the vent be careful not to pinch the windshield trim wire harness.

6. Position the vent into place and press down to secure the clips.

### Note

Over tightening the mounting hardware will cause the paint to chip which is not covered under the warranty.

7. Install the windshield and windshield trim using the supplied hardware. Refer to Photo 8 for the proper washer configuration: large washer, small washer, rubber washer.



8. Perform a BCM sync: Turn key on, Turn 4 way hazards on, Turn key off. Allow hazards to run for 3-4 minutes. Turn Key on, Turn Hazards off, Turn Key off.
9. Test operation of Windshield Trim and all stock lighting—running, turn and brake.

Questions? Call us at: 1 (800) 382-1388 M-TH 8:30AM-5:30PM / FR 9:30AM-5:30PM EST