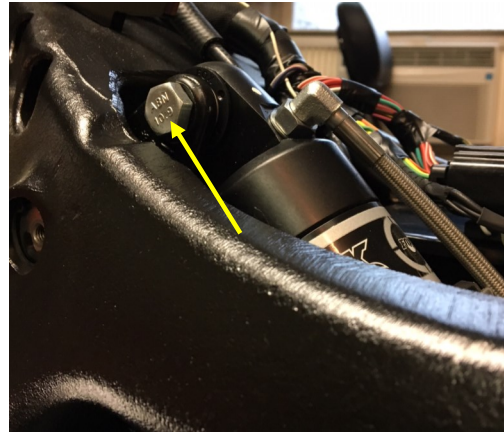
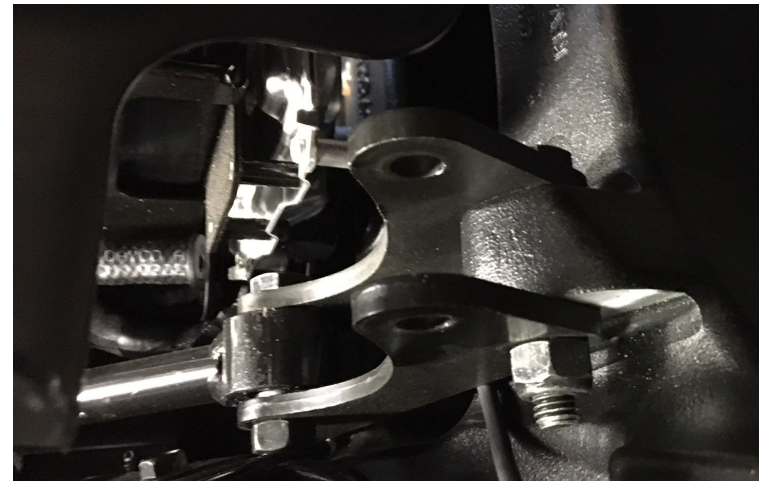
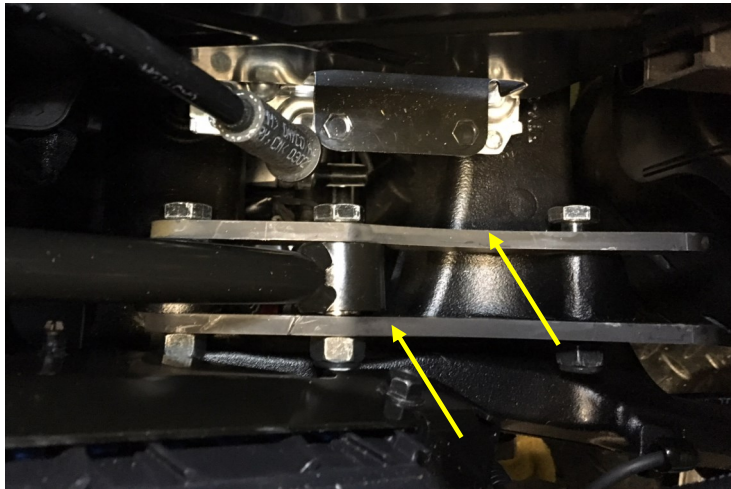


FXA-1025 INDIAN CHIEF LOWERING LINKS



1. Support the bike with a jack stand under the engine, lift to remove the load on the shock. 2. Remove the shock.



3. Replace the links, note that the long tab secures an electrical connector 4. Re-install the stock shock or the air ride shock.

***** WARNING *****

THIS SYSTEM MAY USE THE FULL TRAVEL OF THE SUSPENSION. THE INSTALLER IS RESPONSIBLE FOR THE PROPER INSTALLATION. LOSS OF AIR PRESSURE WILL RESULT IN THE SUSPENSION MOVING TO IT'S LOWEST POSITION. THE INSTALLER IS RESPONSIBLE TO VERIFY THE SAFETY OF THE APPLICATION. IMPROPER INSTALLATION COULD RESULT IN DAMAGE TO THE MOTORCYCLE AND COULD CAUSE SERIOUS INJURY OR DEATH.

AIRFX
Air Suspensions
www.AirFXUSA.com 800-210-1454